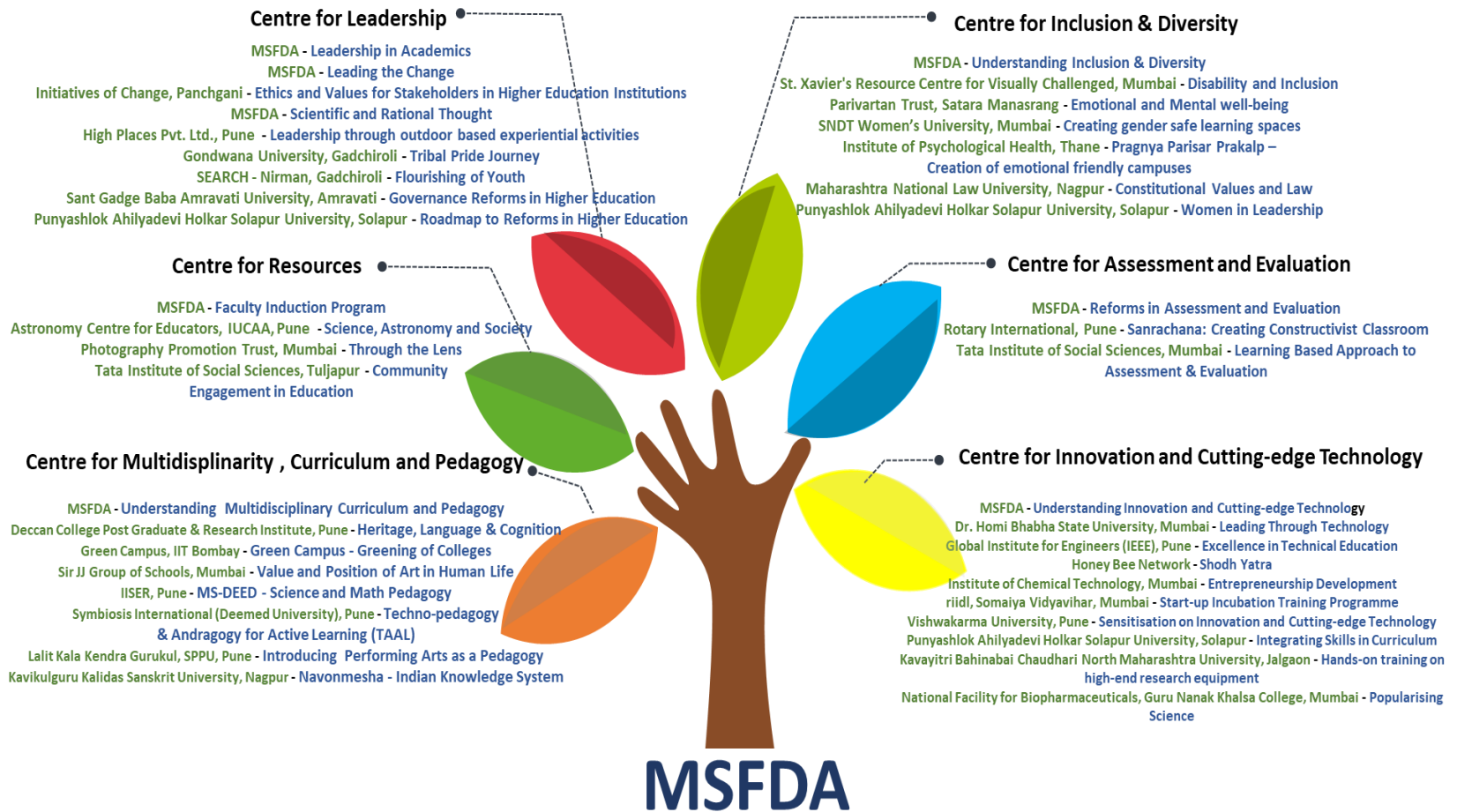




**Maharashtra State  
Faculty Development Academy**

*- a learning organization*

# MSFDA Tree



**Official Film - <https://www.youtube.com/watch?v=YaTbfRiDZ-k>**

# Update on ongoing programmes

Number of Colleges Reached

Total Number of Participants

Total Number of Districts

1,049

5,119

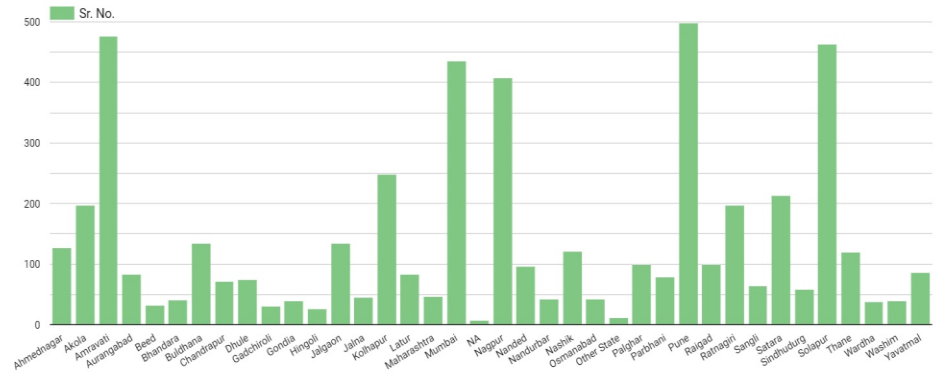
38

\* Includes - NA, Other State and Maharashtra as a district

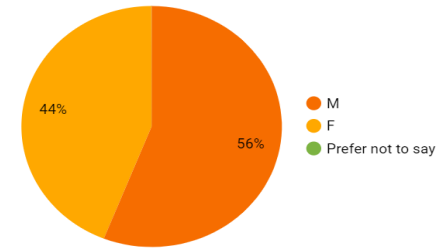
## Centre-wise participation in MSFDA programmes (till May 2023)

No.	Centre	Batche s	Participants					Total
			Student	Faculty	Male	Femal e	Prefer Not to Say	
1	Centre for Evaluation and Assessment	4	0	126	84	42	0	126
2	Centre for Inclusion and Diversity	16	284	305	287	302	0	589
3	Centre for Cutting Edge and Innovation Technology	18	50	588	369	268	1	638
4	Centre for Leadership Development	22	150	668	545	273	0	818
5	Centre for Resources	5	109	101	105	105	0	210
6	Centre for Multidisciplinary Curriculum and Pedagogy	43	29	2709	1481	1256	1	2738
<b>Grand Total</b>		<b>108</b>	<b>622</b>	<b>4497</b>	<b>2871</b>	<b>2246</b>	<b>2</b>	<b>5119</b>

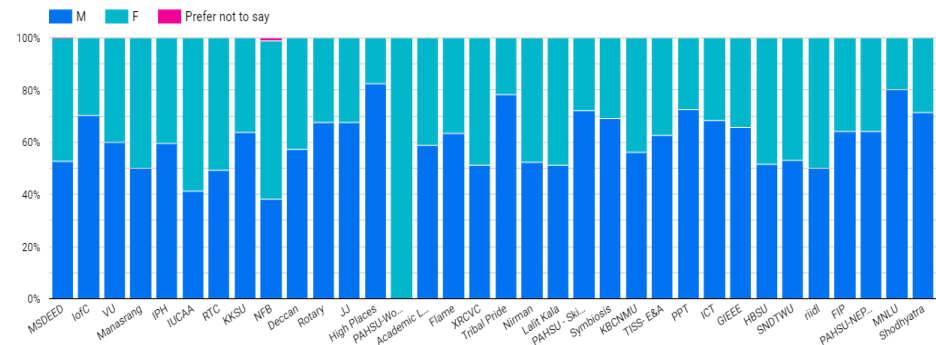
## District wise participation of 5119 participants



## Gender wise breakup of 5119 participants



## Programme-wise gender representation



# New Collaborations and Programmes

- a) **Holistic Learning** with *Sahyadri School, Krishnamurti Foundation India*
- b) **Roadmap to National Education Policy 2020** with *Punyashlok Ahilyadevi Holkar Solapur University*  
*and/or other Universities*
- c) **Introduction to Reasoning** with *ThinQ*
- d) **Case Study Approach** with *CTARA (Centre for technology alternatives for rural areas), IIT Bombay*
- e) **Equity and Excellence in STEM Education (Science, Technology, Engineering and Mathematics)** with  
*Homi Bhabha Centre for Science Education (HBCSE)*
- f) **Teacher education for NEP,2020** with *Azim Premji University*

# Programme Strengthening

Vision Document & Capacity Development Strategy

Third Party Evaluation

MSFDA Portal, Dashboard - Learning Management System (LMS)  
and Mobile App

## Outreach and Communication

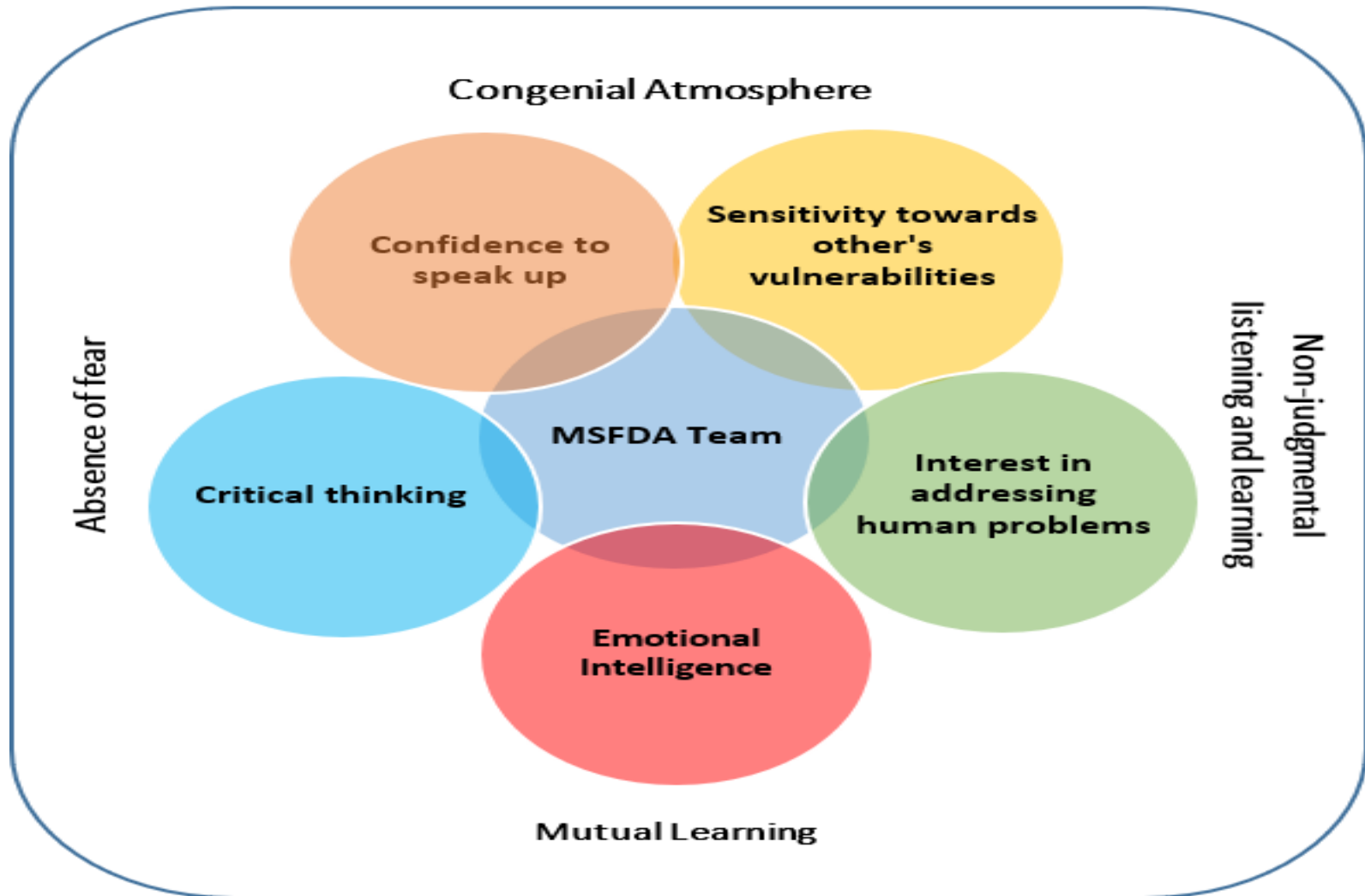


## Agenda No. 7: Human Resources

- A. **Update on Recruitment** - The new recruitments that have been undertaken after last Board meeting against the positions approved by the Board
- B. **Increment on continuation of staff** - decision on continuation of staff is being taken upon assessment of their performance, it is proposed that after completion of one year contract duration, an employee of MSFDA may be given a 5% rise on the salary/remuneration from the date of renewal of contract
- C. **Appraisal Policy** - All the appointments up to the Joint Director level are contractual and for a period of one year with a clause for renewal on the basis of performance. Each employee is provided with a Job Description along with Key Result Areas (KRAs). These KRAs are finalized in consultation with the concerned employee.

# Capacity building of Staff

## MSFDA Work Culture





# Agenda No. 10 : Financial Update and Plan

**A. Financial updates** - Receipts and Expenditure as on 31st May, 2023 is depicted in the table below

Receipts				Expenditure		
Sr. No	Items		Amount in Rs	Sr. No	Year	Amount in Rs
1	State (14.12.21)	Grant	5,35,92,000	1	2021-22	1,06,87,080
	State (11.08.22)	Grant	5,83,29,040			
	State (24.03.23)	Grant	3,97,46,780			
2	Equity		54,25,000	2	2022-23	5,54,40,808
3	Registration participants	Fee from	29,20,629	3	2023-24 (upto 31 <sup>st</sup> May, 2023)	1,27,40,214
4	Interest on account	the Savings	26,53,220			
	<b>Total</b>		<b>16,26,66,669</b>		<b>Total</b>	<b>7,88,68,102</b>
					<b>Balance</b>	<b>8,37,98,566</b>

## New Policies

Capacity building of teachers as a regular annual affair

Yearly contribution by Universities and Colleges to MSFDA for conduct of Training programmes -

Shodhyatra